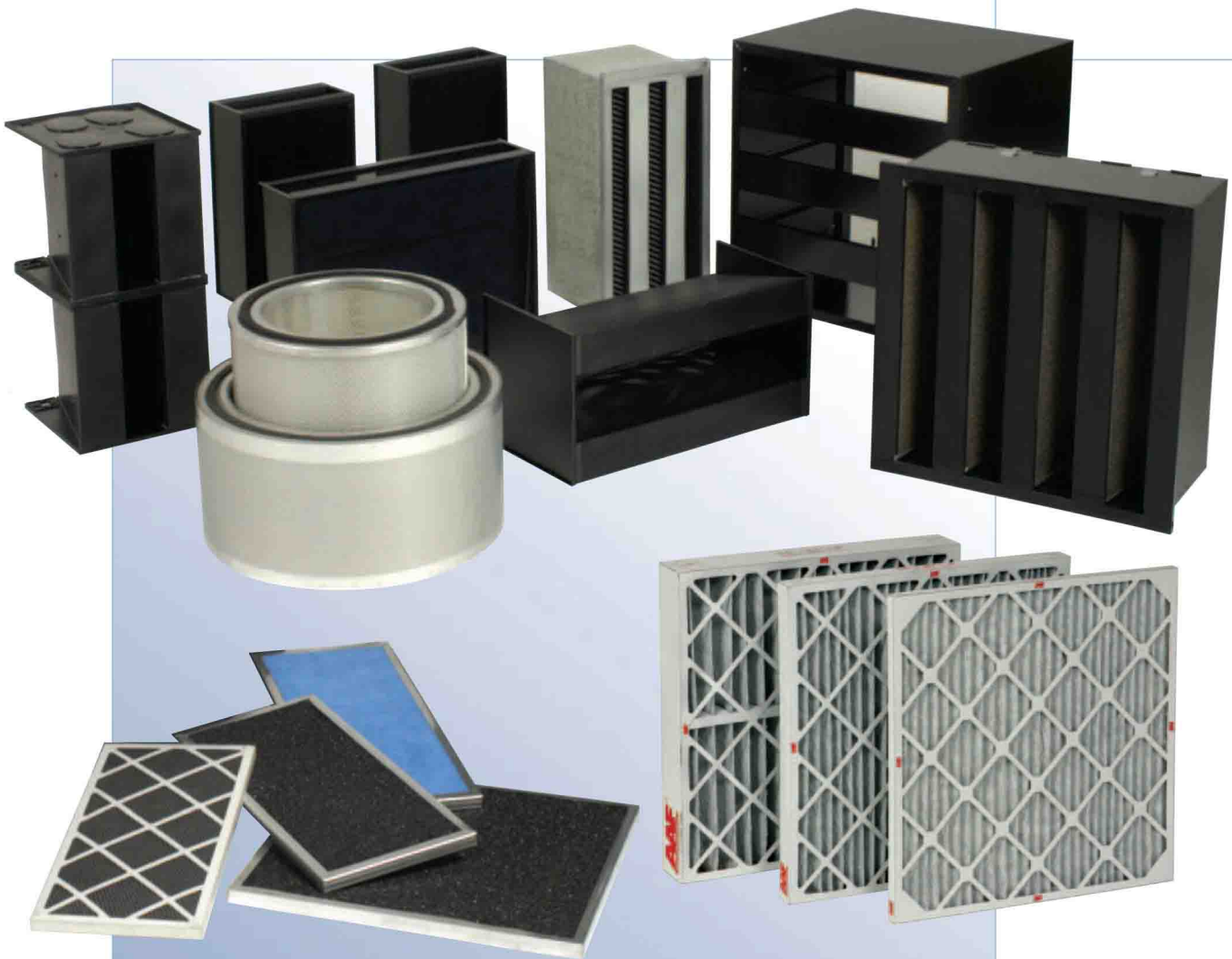




AmerSorb™ MPV
AmerSorb™ P
AmerSorb™ H

Chemical Air Filtration



SHAMON
AIR & FILTRATION

Chemical Air Filtration

- Economical, long-lasting solution to many odor problems
- Choose high performance media to match your operating environment and the operating performance you desire
- Effective on a wide variety of gases and odors found in:
 - ✓ Commercial Buildings
 - ✓ Industrial Facilities and Laboratories
 - ✓ Shopping Centers and Food Court Areas
 - ✓ Health Care, Bio-technology, and Pharmacology Applications
 - ✓ Restaurants, Casinos, and Hotels
 - ✓ Public and Military Airports
 - ✓ Schools, Colleges, and Universities
 - ✓ Microelectronic Cleanroom Manufacturing
 - ✓ Nanotechnology
- Specified for new construction, retrofit, or replacement of existing filters
- Suitable for removing Volatile Organic Compounds (VOC's) from exhaust or intake air; eliminating internal emission odors; and effectively recirculating ventilation air

An Important Component of Improving Indoor Air Quality in Commercial Buildings

Odor and chemical removal is a primary component for improving Indoor Air Quality (IAQ) in commercial buildings. Removing gases, vapors, odors, and fumes impacts human health and comfort level. A broad selection of prefilters and high-efficiency final filters are available to remove dust particulate and microbial contaminants. To totally clean the air, however, odor causing gases and vapors must also be removed. While HEPA filtration is effective in removing the smallest particles from the airstream, chemical pollutants, including those that cause odors, are too small to be contained by this style of filter. AmerSorb™ filters, replaceable inserts, and housings are the solution to your odor problems.

What Type Of Adsorbent Media Works Best For Your Application?

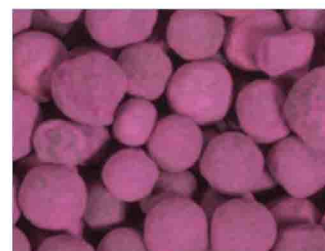
Granular Activated Carbon (GAC) is the universal choice for eliminating and controlling odor causing gases and vapors for most applications. Your AAF IAQ Professional will help you determine the appropriate solution for your odor problems.



AmerSorb CSC

AmerSorb PP: Potassium Permanganate (KMnO₄) is effective in removing compounds such as sulfur compounds (acids), formaldehyde, and oxides of nitrogen. Typical installations include wastewater treatment plants, pulp and paper mills, airports, and chemical plants.

AmerSorb CSC: 60% (CTC) Activated Coconut Shell Carbon effectively removes odors associated with diesel fumes, hydrocarbons, tobacco smoke, manufacturing processes, cooking, and VOC's.



AmerSorb PP



AmerSorb 50/50

AmerSorb AG: Acid Gas Activated Carbon is typically used where hydrogen sulfide and other sulfur compounds are present in heavier concentrations in the air stream. This media can be used for corrosion control operations including petrochemical applications.



AmerSorb AG

AmerSorb 50/50: Blend (Potassium Permanganate and GAC) is recommended for applications, such as loading docks near air handling equipment (air intake), where sulfur, aldehydes and VOC's are all present in the air stream.

AmerSorb™ H Series Carbon Filter Housings, Trays, and Inserts



Housings:

- *Steel Construction — Built to Last: 16-Gauge Cold-Rolled Steel*
- *Black Powder Paint Finish (Corrosion Resistant)*
- *Easy Access to Filters From Rear or Through Side Access Doors*
- *Bolt Units Together to Form High Capacity Banks*
- *Optional Built-in Prefilter and Afterfilter Tracks*

AmerSorb™ AF-2000 Filter Housing

AmerSorb™ AF-2000 Housings are built for long service life and convenience. Steel construction extends the life of the housing and also provides superior corrosion resistance. Units can be bolted together and stacked to form a bank of filters for higher airflow applications. Front access housings use a one-piece removable front access grid assembly that is gasket sealed to prevent air bypass. Some applications require the use of a side-access carbon housing that has side-access doors for easy and cost-effective replacement of the carbon trays.

AmerSorb™ 112 Carbon Filter Housing

- *Holds Two AmerSorb 12 Activated Coconut Shell Carbon Insert Trays*
- *Carbon: 60 lbs.*

AmerSorb™ 22 Carbon Filter Housing

- *Holds Four AmerSorb 18 Activated Coconut Shell Carbon Insert Trays*
- *Carbon: 72 lbs.*

Inserts/Trays:

- *Steel Construction — Built to Last: 16-Gauge Cold-rolled Steel with Black Powder Paint Finish*
- *Some Styles Available in Plastic for Environmentally Friendly Disposal*
- *Wide Variety of Sizes to Fit All Manufacturers' Housings*
- *Removable Top Easily Slides Off for Media Refill*
- *Your Choice of AmerSorb Media: CSC, PP, 50/50 Blend, or AG*

AmerSorb™ RT Carbon Replacement Trays

AmerSorb RT carbon inserts are easy to use. Choose to refill the inserts onsite, send them to AAF for refill (minimum 1,000 trays), or simply dispose of the spent trays and replace with new ones.

- *Replacement for AmerSorb AF-2000 Housing Inserts*
- *Carbon: 90 lbs. (9 lbs./tray)*

AmerSorb™ 12 Carbon Replacement Trays

- *Fits AmerSorb 112 Filter Housings*
- *Carbon: 30 lbs. (each module)*

AmerSorb™ 18 Carbon Replacement Trays

- *Fits AmerSorb 22 Filter Housings*
- *Carbon: 18 lbs. (each module)*



SHAMON AIR & FILTRATION
EQUIPMENT NZ LTD
Ph +64 9 580 0075
Fax +64 9 580 0076
WWW.SAFE.CO.NZ

